

# ThermalBrane 6.5™

EXTRA HEAVY DUTY

DOUBLE SIDED REFLECTIVE FOAM INSULATION

HOME & SHED



**Product Code: TB6-30 | I/N: 0811012**

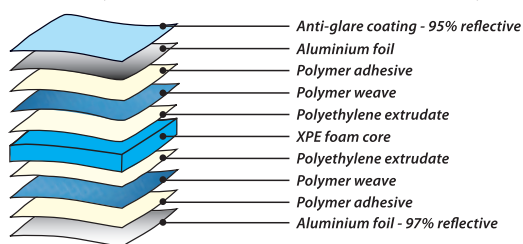
ThermalBrane 6.5™ is an Extra Heavy Duty three-in-one reflective insulation, thermal break and medium vapour barrier. ThermalBrane 6.5™ is suitable for use in roof, wall and floor applications. Designed to manage heat gain and heat loss, ThermalBrane 6.5™ offers superior thermal performance to conventional insulation, and reduces thermal bridging and conductivity between building elements.

ThermalBrane 6.5™ is the recommended option for double brick constructions.

- ▶ 150 mm flap provided for increased coverage and reduced wastage.
- ▶ Made with high-density XPE foam; compression in situ is minimised.
- ▶ Contributes a reflective R-value when installed adjacent to an air cavity.
- ▶ Highly effective in dampening noise.
- ▶ Water resistant, fire resistant.
- ▶ Fibre-free and non-allergenic.
- ▶ Rigorously tested by independent recognised accredited laboratories in compliance with AS/NZS 4859.1:2002/Amdt 1:2006 to ensure all product claims are met.

## Construction

ThermalBrane 6.5™ is made with aluminium foil laminates with reflectivity of 97% and emissivity of 0.03 to one side and 95% reflectivity and emissivity of 0.05 to the other, in compliance with ASTM Standard E 408-71 (Re-approved 2002). At its core is 6.5 mm of chemically cross-linked, closed-cell high-density XPE foam.



Ametalin utilises Advanced Laminating Technology; the polymer adhesive remains tacky for an indefinite period and provides superior resistance to heat, fire and delamination.

## Declared Total System R-values for Typical Systems\*

ThermalBrane 6.5™ has a material R-value of R0.16. When it is incorporated into typical construction systems, the following thermal performance can be achieved:

### ROOFS

		WINTER	SUMMER
<b>Metal Roof</b> CALCULATION REF: 12240	22° Pitched metal roof with <b>raked ceiling</b> unventilated	R <sub>f</sub> 1.3	R <sub>f</sub> 3.7
<b>Metal Roof</b> CALCULATION REF: 12203	22° Pitched metal roof with <b>flat ceiling</b> unventilated	R <sub>f</sub> 1.4	R <sub>f</sub> 2.4
<b>Metal Roof</b> CALCULATION REF: 12202	22° Pitched metal roof with <b>flat ceiling</b> ventilated	R <sub>f</sub> 1.2	R <sub>f</sub> 2.7
<b>Tile Roof</b> CALCULATION REF: 12165	22° Pitched tile roof with <b>flat ceiling</b> unventilated	R <sub>f</sub> 1.5	R <sub>f</sub> 2.5
<b>Commercial or Shed Roof</b>	5° metal roof 100 mm ceiling CALCULATION REF: 299r380b	R <sub>f</sub> 1.4	R <sub>f</sub> 3.2

### WALLS

<b>Steel Stud Framed Wall</b>	90 mm studs lined with 10 mm plasterboard CALC. REF. : 12256	R <sub>f</sub> 1.8	R <sub>f</sub> 1.6
<b>Steel Stud Framed Wall</b>	90 mm studs CALCULATION REF: 299r44b	R <sub>f</sub> 1.2	R <sub>f</sub> 1.1

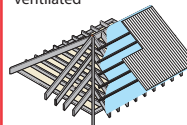
\*The contribution of this product to the total system R-value depends on installation and environmental conditions. The R-values will be reduced in the event of the accumulation of dust on upward facing surfaces and in those cavities that are ventilated.

## MEDIUM VAPOUR BARRIER

### DECLARED TOTAL SYSTEM R-VALUES\*

#### METAL ROOF

22° pitched flat ceiling ventilated

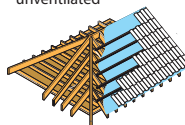


CALCULATION REF: 12202

WINTER	R <sub>f</sub> 1.2
SUMMER	R <sub>f</sub> 2.7

#### TILE ROOF

22° pitched flat ceiling unventilated



CALCULATION REF: 12165

WINTER	R <sub>f</sub> 1.5
SUMMER	R <sub>f</sub> 2.5

#### COMMERCIAL OFFICE

5° pitched, 1000 mm ceiling

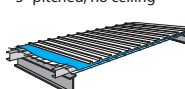


CALCULATION REF: 299r381b

WINTER	R <sub>f</sub> 1.4
SUMMER	R <sub>f</sub> 4.5

#### WAREHOUSE SHED

5° pitched, no ceiling

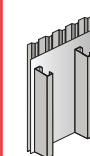


CALCULATION REF: 299r382b

WINTER	R <sub>f</sub> 0.9
SUMMER	R <sub>f</sub> 2.0

#### WALLS:

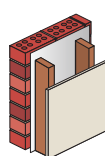
Stud Framed



CALCULATION REF: 299w44b

WINTER	R <sub>f</sub> 1.2
SUMMER	R <sub>f</sub> 1.1

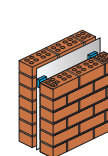
Brick Veneer



CALCULATION REF: 299w371b

WINTER	R <sub>f</sub> 2.1
SUMMER	R <sub>f</sub> 1.9

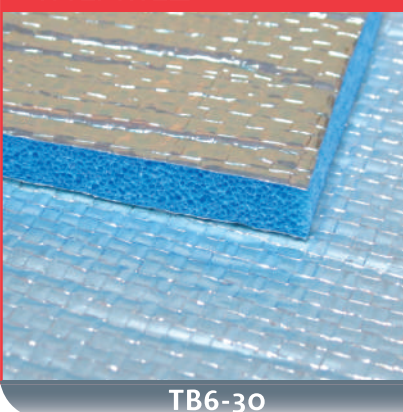
Double Brick



CALCULATION REF: 299w3811e

WINTER	R <sub>f</sub> 2.2
SUMMER	R <sub>f</sub> 2.0

## ThermalBrane 6.5™



## Classification

ThermalBrane 6.5™ classifications in accordance with AS/NZS 4200.1:1994 and AS/NZS 4859.1:2006

PRODUCT	THERMALBRANE 6.5™		AS/NZS 4200.1:1994
FLAMMABILITY INDEX	AS 1530.2-1993	Low	Low ≤ 5
THERMAL RESISTANCE	ASTMC518	R0.16	
DUTY	AS/NZS 4200.1:1994	Extra Heavy	Classification
EMITTANCE	AS/NZS 4201.5:1994	Bright side: 0.03 Anti-glare side: 0.05	Value
REFLECTIVITY		Bright side: 97% Anti-glare side: 95%	Value
RESISTANCE TO WATER PENETRATION	AS/NZS 4201.4:1994	High	Pass
VAPOUR BARRIER	ASTM E96	Medium, PROCEDURE B, WET CUP TEST	Classification
MACHINE DIRECTION TENSILE STRENGTH	AS 1301.448s-91	27.7 kN/m	Min 13.0 kN/m
LATERAL DIRECTION TENSILE STRENGTH	AS 1301.448s-91	21.4 kN/m	Min 10.5 kN/m
MACHINE DIRECTION EDGE TEAR	TAPPI T 470 om-89	1432 N	Min 90 N
LATERAL DIRECTION EDGE TEAR	TAPPI T 470 om-89	1045 N	Min 90 N
RESISTANCE TO DRY DELAMINATION	AS/NZS 4201.1:1994	Pass	Pass
RESISTANCE TO WET DELAMINATION	AS/NZS 4201.2:1994	Pass	Pass
SHRINKAGE	AS/NZS 4201.3:1994	< 0.1%	< 0.5%
SURFACE WATER ABSORBENCY	AS/NZS 4201.4:1994	Unclassified	Classification

PRODUCT CODE:	TB6-30	WATER VAPOUR TRANSMISSION RATE: 1.4 g/m <sup>2</sup> •24hr (23°C, 50% RH)
THICKNESS:	6.5 mm	
ROLL SIZE:	1350mm x 22.25 m (30 m <sup>2</sup> )	AMETALIN CLASSIFICATION: MEDIUM VAPOUR BARRIER
WEIGHT:	15.5 kg	

## NCC/BCA Compliant

ThermalBrane 6.5™ complies with AS/NZS 4859.1:2002/Amtd 1:2006 and AS/NZS 4200.1:1994, and therefore meets all the requirements of the *National Construction Code* and *Building Code of Australia* for insulation and pliable building membranes.

### BUSHFIRE ATTACK LEVELS

ThermalBrane 6.5™ complies with AS 3959-2009 *Construction of buildings in bushfire-prone areas* for use in wall systems BAL – LOW to BAL – FZ.

## Total System R-values

R-values apply to typical conditions for mainland Australian capital cities and have been calculated in accordance with AS/NZS 4859.1:2002/Amtd 1:2006. For detailed design of building systems, seek advice based on actual site conditions from a qualified licensed engineer.

## Reflectivity

ThermalBrane 6.5™ is made with aluminium foil laminates with reflectivity of 97% and emissivity of 0.03 to one side and 95% reflectivity and emissivity of 0.05 to the other, in compliance with *ASTM Standard E 408-71 (Re-approved 2002)*.

## Storage

This product should be stored upright and under cover in a clean, dry place in the pack provided.

## Dimensions

ThermalBrane 6.5™ is sold in size:  
1350 mm x 22.25 m + 150 mm flap (30 m<sup>2</sup>)

## Specification Notes

When specifying, state the following:

**Product Name: THERMALBRANE 6.5™**

The insulation to be installed shall be ThermalBrane 6.5™ double sided reflective, fibre-free thermo-reflective insulation, comprised of cross-linked, closed-cell core XPE foam with anti-glare foil facing on one side and plain foil facing on the other side, thermal resistance R0.16 and 150 mm overlap piece included. Product is manufactured by Ametalin and shall be installed in accordance with *AS/NZS 4200.2: 1994 Pliable Building Membranes and Underlays, Part 2: Installation Requirements*.

Emittance Bright Side: 0.03, Anti-glare Side: 0.05  
Water Vapour Transmission (WVT): 1.4 g/m<sup>2</sup>•24hr  
Vapour Resistance: 85.61 MN•s/g  
Vapour Barrier Classification: Medium  
Water Barrier Classification: High  
Duty: Extra Heavy in accordance with AS/NZS 4200.1:1994

© 2014 Ametalin All Rights Reserved. Ametalin is a division of Amalgamated Metal Industries Pty. Ltd. Product information in this publication and otherwise supplied to users is based on our general experience and is given in good faith, but due to factors outside our knowledge and control which may affect the use of products, no warranty is given or implied with respect to this information or the product itself regarding the suitability of the product for any particular purpose. The usage of this and other building membranes will affect moisture migration in the building element. The purchaser should independently determine the suitability of the product for the intended purpose. For large projects with complex air-conditioning and condensation issues, designers may wish to contact our technical department. Amalgamated Metal Industries Pty. Ltd. reserves the right to amend product specifications without prior notice. Information provided is considered to be true and correct at the time of publication. DTE-41842-3

AUSTRALIAN DESIGNED, AUSTRALIAN OWNED.

AMETALIN

41-43 Birralee Road Regency Park SA 5010

T: +61 8 8347 0941 F: +61 8 8347 0915 E: info@ametalin.com W: ametalin.com

Manufacturers of building membranes | insulation products | flexible packaging



ametalin  
raising the standard

## Health and Safety Information

Ametalin has assessed THERMALBRANE 6.5™ according to the criteria outlined in the *National Occupational Health and Safety Commission (NOHSC):1008 (1998)* and *NOHSC: 1005 (1999)*. As a result of the assessment, this product is classified as non-hazardous according to the NOHSC criteria. To reduce risk of UV damage when installing this product, wear protective clothing, safety glasses and sunscreen, and work in the shade wherever practical.

## Installation

### ELECTRICAL SAFETY PRECAUTIONS - BEFORE YOU START:

**Ametalin stresses the importance of safe installation practices for foil-based insulation as critical to installer and consumer safety. Aluminium Foil Insulation Association Inc. (AFIA) has prepared Work Method Statements and Hazard Management forms to assist contractors and installers in safe installation of reflective insulation products. These documents are available under 2009 AFIA WMS & Hazard Management, at [www.afia.com.au/news/health-and-safety/](http://www.afia.com.au/news/health-and-safety/).**

THERMALBRANE 6.5™ should be installed in accordance with *AS/NZS 4200.2: 1994 Pliable Building Membranes and Underlays, Part 2: Installation Requirements*.

### GENERAL

THERMALBRANE 6.5™ is not designed to withstand prolonged direct exposure to the elements. Accordingly, the outer construction envelope should be installed without delay. Aluminium foil should not come into contact with wet concrete or mortar, as the aluminium is susceptible to alkali corrosion. If installed within 500 metres of the sea, or in a non-residential building where foil surfaces may be exposed to a corrosive atmosphere (including agricultural sheds), foil surfaces should face an enclosed, un-vented air space. To ensure optimum thermal insulation performance, as well as satisfactory durability, a 25 mm air space adjacent to the foil side of the product is recommended.

### ROOFS

In roofs, THERMALBRANE 6.5™ is to be installed as a continuous membrane, blue anti-glare side facing out and laid loosely over rafters on 450 mm centres with a minimum drape of 40 mm. For larger rafter spacings in metal roofs, the drape should be increased proportionally. Joints must be overlapped by no less than 150 mm to facilitate drainage. 150 mm flap is provided for convenience. *AS 3959-2009 Construction of buildings in bushfire-prone areas* requires that all sarking products be installed under roof battens. When THERMALBRANE 6.5™ is used under tiles it must be installed under battens in order to comply with *AS/NZS 4200.2:1994*.

### FRAMED WALLS

In framed walls and gables, THERMALBRANE 6.5™ should be installed horizontally as a continuous membrane by fixing to all framing members with the blue anti-glare side facing out and overlapped by no less than 150 mm to facilitate drainage. 150 mm flap is provided for convenience. THERMALBRANE 6.5™ should extend from the top plate to the bottom plate on concrete slabs or bearers in timber construction. Fixings are to

be no more than 450 mm apart and should be galvanised clouts, or staples, for fastening to timber construction and tech screws for fastening to steel constructions. In high wind areas, it is recommended to install using flat punched multi-point fasteners or cap screws. Horizontal, vertical and end overlaps must be 150 mm if not taped or 50 mm taped with Ametalin Insulation/Ducting Tape, with all top layers overlapping the outside of lower layers to prevent water ingress. Stagger any vertical overlaps. Any damage made to THERMALBRANE 6.5™ during installation including holes and tears must be repaired.

Where THERMALBRANE 6.5™ is intended to act as a vapour barrier, tape and seal all overlapped joints, penetrations and discontinuities with Ametalin Insulation/Ducting tape to prevent air movement. When THERMALBRANE 6.5™ is installed as a sarking membrane, all penetrations shall be sealed or turned up to facilitate drainage around penetration. Ensure window and door openings are cut neatly and carefully and are properly fitted at flashing points. THERMALBRANE 6.5™ shall be cut back from any hot flue to avoid being a fire hazard. This can be achieved by a clear space of at least 50 mm, or as recommended by the manufacturer of the flue and approved by the local authority.

### DOUBLE BRICK AND MASONRY CAVITY WALLS

After the inner leaf of the double brick or masonry cavity wall is laid, place Ametalin Cavity Spacers™ onto the brick ties via the vertical slit provided, with the white adhesive side facing outwards. Install one cavity spacer per square metre to ensure the required air space. Remove adhesive tape backing. Install THERMALBRANE 6.5™ horizontally, cut slits through the pliable building membrane at all brick tie positions, and place THERMALBRANE 6.5™ into position over the brick ties. Push the membrane and the cavity spacer into position against the inner back leaf.

### FLOORS

Adequate drainage provisions must be given for all floor applications. Contact our technical department for more information about use in floors.

© 2014 Ametalin All Rights Reserved. Ametalin is a division of Amalgamated Metal Industries Pty. Ltd. Product information in this publication and otherwise supplied to users is based on our general experience and is given in good faith, but due to factors outside our knowledge and control which may affect the use of products, no warranty is given or implied with respect to this information or the product itself regarding the suitability of the product for any particular purpose. The usage of this and other building membranes will affect moisture migration in the building element. The purchaser should independently determine the suitability of the product for the intended purpose. For large projects with complex air-conditioning and condensation issues, designers may wish to contact our technical department. Amalgamated Metal Industries Pty. Ltd. reserves the right to amend product specifications without prior notice. Information provided is considered to be true and correct at the time of publication. DTE-41842-3

AUSTRALIAN DESIGNED, AUSTRALIAN OWNED.

AMETALIN

41-43 Birralee Road Regency Park SA 5010

T: +61 8 8347 0941 F: +61 8 8347 0915 E: [info@ametalin.com](mailto:info@ametalin.com) W: [ametalin.com](http://ametalin.com)

Manufacturers of building membranes | insulation products | flexible packaging



ametalin

raising the standard